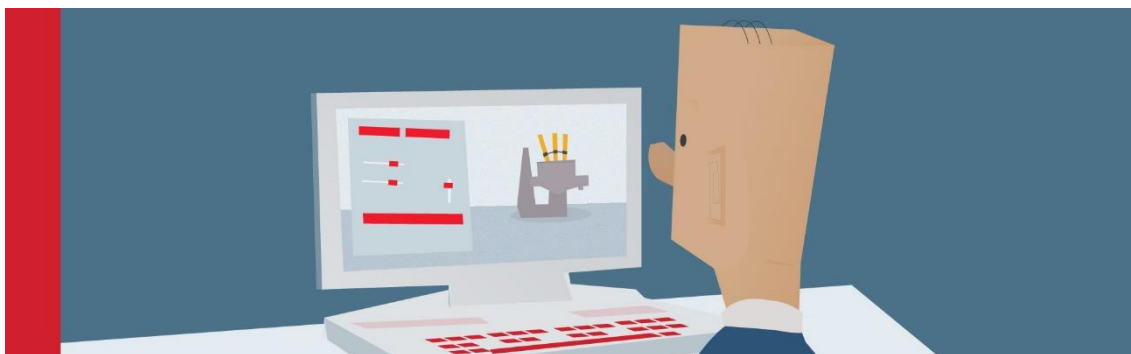


European Steel Skills Agenda (ESSA)



What's New?

Introducing steelHub

steelHub was created with the aim of connecting educational resources distributed in multiple locations and in different formats. steelHub is a learning network where content is structured in a competency model. Whether it is a video, a simulator or an online course, the information is organized according to international standards and reviewed by experts.

The pillars

- **Sustainability:** steelHub facilitates a collaborative eco-system to ensure the sustainability of access to high-quality, up-to-day and innovative training resources within a dynamic continue improvement process.
- **Innovation:** steelHub facilitate the access of the best and most modern training techniques, like 3D models, simulators, games and challenges to engage talents into a high-quality and continue learning experience journey.
- **Confidentiality:** steelHub preserves the learners' information with worldsteel's strict privacy policies. As an organization based in Europe, steelHub comply with GDPR regulations.
- **Quality:** Quality of matching training content to learners' needs based on content curation process with an industry standard competence map. The content quality is based on feedback of thousands of users worldwide.

Competence Model

The main goal of this stelHub stage is to have a tool to upload the Standard Occupation and Competence DB, to be reviewed, updated and linked with content, qualification programs, etc. The standard Competence DB have been developed based on the ESCO and NOS standard. The link to those standards is available in the tool to have always the reference. The selection start with the "Sector", which is divided in "Families". Each Family has several "Occupations".



Content/Evaluation Library

The objective of this steelHub stage is the implementation of an infrastructure that allows the connection between Publishers, which offer training content and evaluation, and Learners that need up-skilling and reskilling. This first stage includes implementation of standard SCORM protocols, licenses management, publishers' access and learner report.

steelHub Facts

- 3,709 learners
- 120 courses
- 14 simulations
- 10 publishers
- 10 languages supported

ESSA Website: www.estep.eu/essa

Follow us on  and 